



Ingenious Health Sciences
The way to shape the world! **CONSULTING**

Monitoring and Evaluation (M & E)

Muazzam Nasrullah, MD, MPH, PhD
Chief Executive Officer (CEO)

Segal Family Foundation Annual Meeting
Sept 19-21, 2019



Introduction

- Born and raised in a developing country, Pakistan
- First-hand knowledge of some of the challenges that many of NGOs in the audience are facing/going to talk about
- Trained/Studied in Europe and USA
- Unique ability to see both sides of the picture
- Currently working with Ministries of Health of developing countries to help monitor and evaluate their national programs

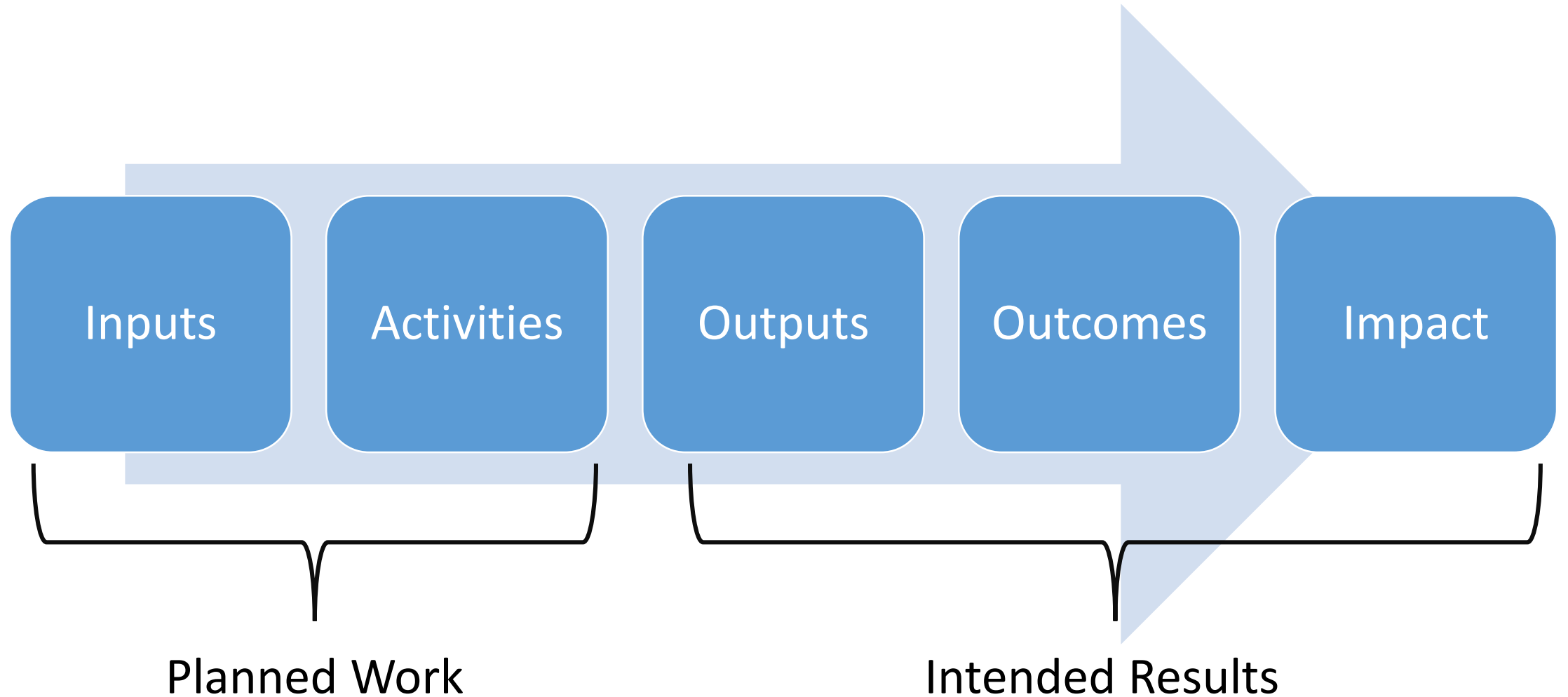


Monitoring & Evaluation (M & E)

Formal and systematic way to reflect on what is being done and try to learn from it to improve the outcomes

- Monitoring
 - Keeping track of what you are doing while you are doing it, so that you can take corrective action, if necessary
- Evaluation
 - Finding out if you have achieved the effect on your target population that you said you would achieve, after you have finished implementing the activities.

Logic Model





Inputs

- The financial, human, and material resources used for developing, deploying and managing the intervention
- Examples
 - Technical expertise
 - Funds
 - Equipment
 - Teachers/Students



Activities

- Actions taken or work performed to meet the objectives
- Examples
 - Training workshops
 - Teaching (online/on-site)
 - Provision of Immunizations
 - Provision of counselling after diagnosis of a disease



Outputs

- The products that result from intervention
- Examples
 - Number of people trained
 - Number of media campaigns
 - Number of teacher served



Outcomes

- The results of the program or changes that occur either immediately or some time after activities are completed
- Examples
 - Number of people employed
 - Number of people tested for a disease
 - Number of people cured of a disease

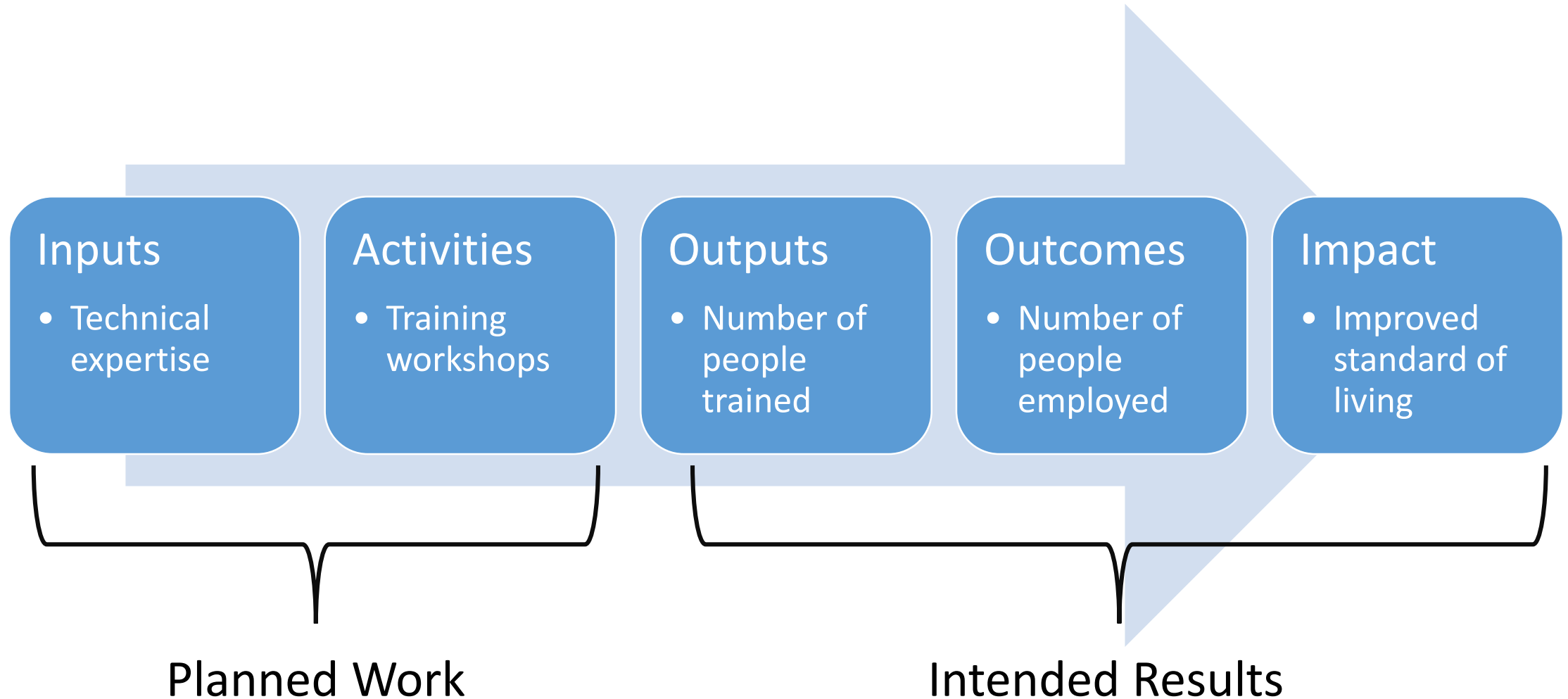


Impact

- The wider effect of the program on long-term consequences (negative or positive)
- Examples
 - Improved standard of living
 - Improved overall health
 - Decreased overall mortality



Logic Model



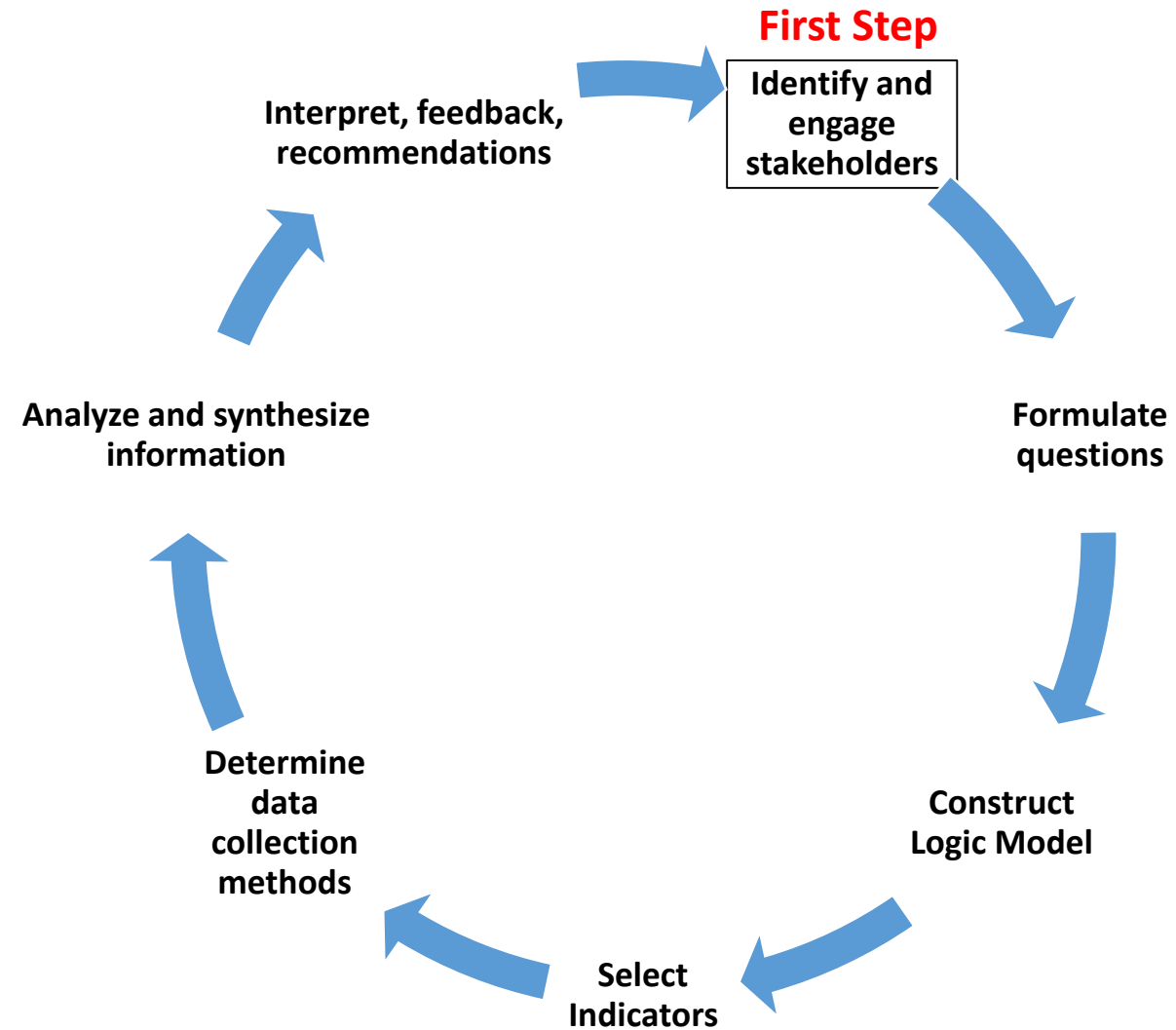


Indicators, Baseline & Targets

Indicator	<p>A written measure used to demonstrate change in a situation, or the progress in, or results of, an activity, project, or program</p> <p><u>Example</u></p> <ul style="list-style-type: none">• Proportion of people treated of the disease
Baseline	<p>Measurement that provides a basis for making comparisons of past performance to current performance</p> <p><u>Example</u></p> <ul style="list-style-type: none">• Reduce disease burden from <u>5%</u> to 0.5%
Target	<p>Something that you are trying to achieve</p> <p><u>Example</u></p> <ul style="list-style-type: none">• Reduce disease burden from 5% to <u>0.5%</u> by X time (months/years)



M & E Steps



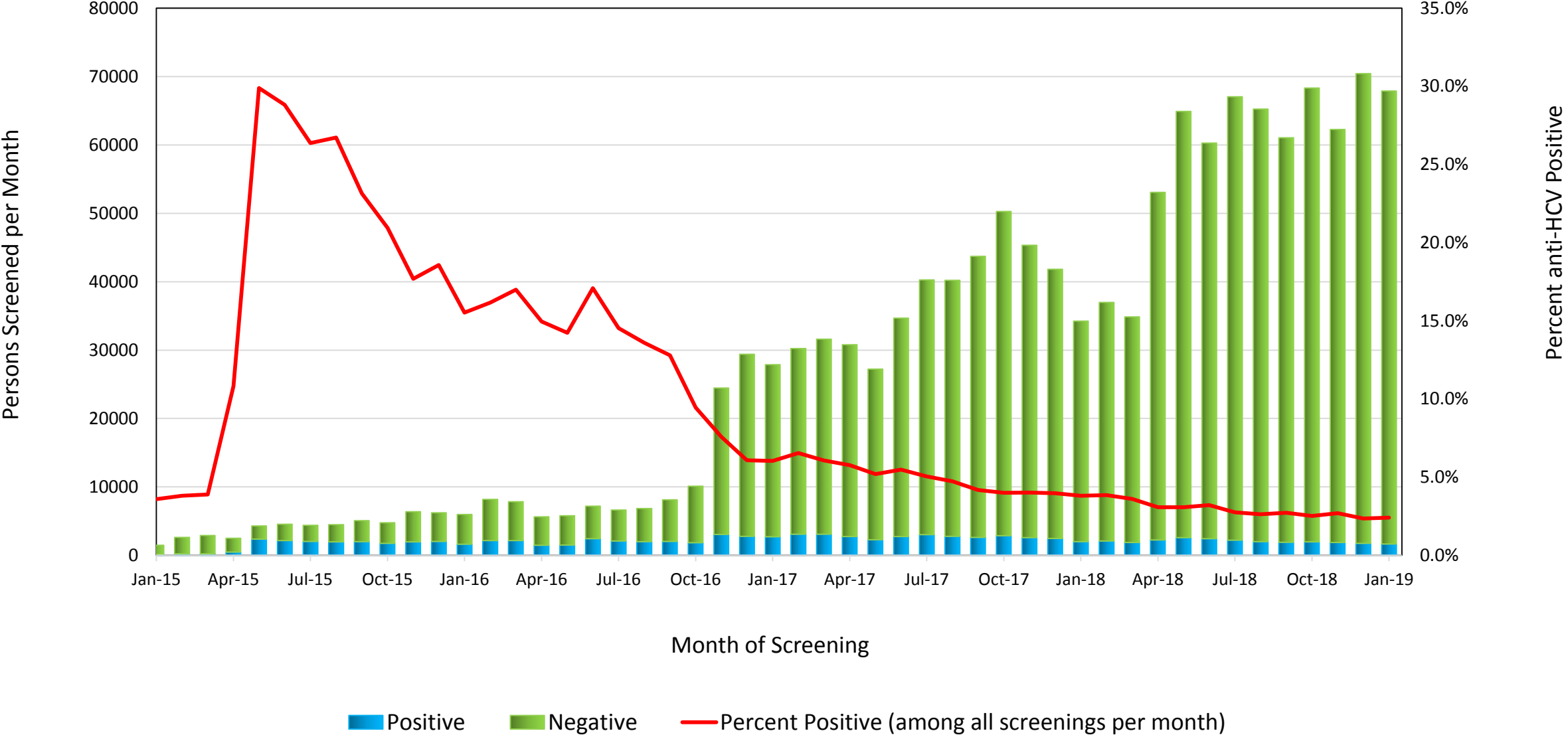
Georgia Hepatitis C Elimination Program



- HCV Elimination Program launched on April, 2015
 - Pharmaceutical company donated the medications
- Goal: 90% reduction in HCV prevalence by 2020
 - 5% chronic HCV prevalence to be reduced to 0.5%
- Initial phase focused on treatment of infected HCV persons with advanced liver disease
- Treatment for “ALL” infected HCV persons since June 2016



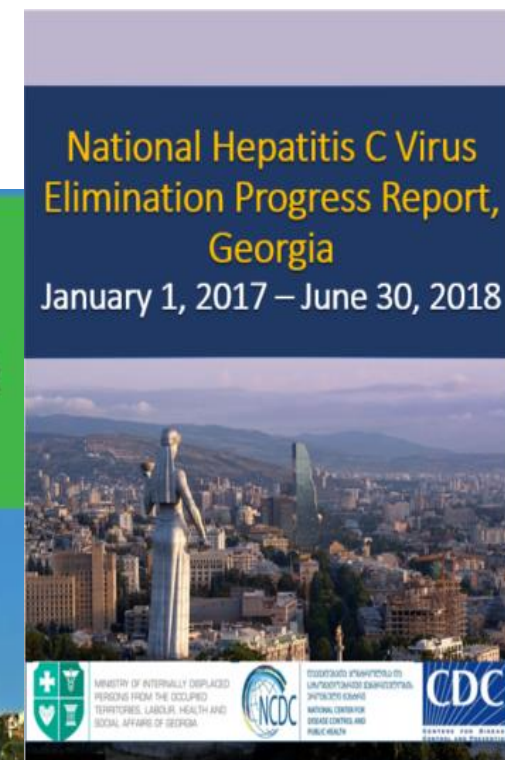
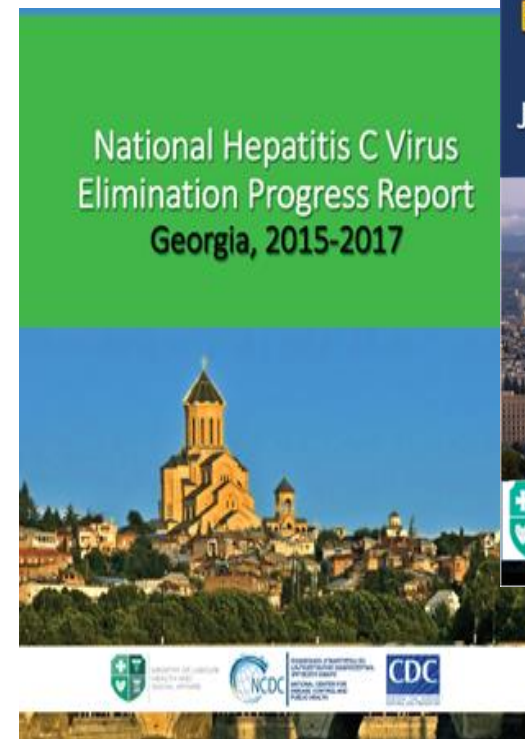
Hepatitis C Testing and Prevalence per Month, Georgia, January 2015 - January 2019





Impact of the Program

- HCV disease burden decreased by 37% to 3.4%
- HCV new infections decreased by 37% to 0.12/100 person-years
- Prevented 252 deaths, increasing to 2,901 deaths averted if benefits tracked until 2030





Ingenious Health Sciences
The way to shape the world! **CONSULTING**

Thank you!

Muazzam Nasrullah, MD, MPH, PhD

Chief Executive Officer

mnasrullah@ingenioushealthsciences.com

Ph: +1 678 539 0280

www.ingenioushealthsciences.com